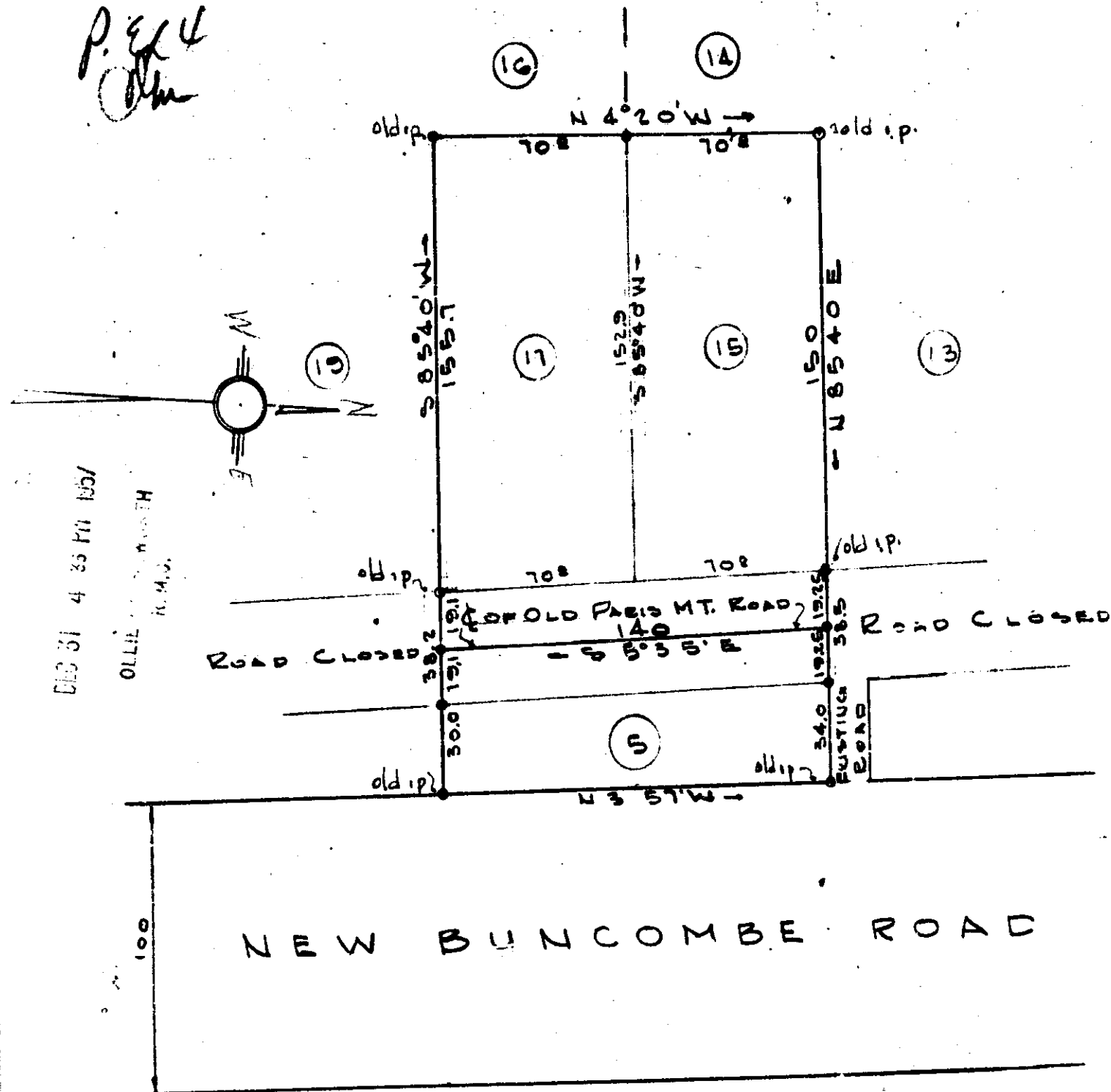


U.S. 117 D. 10

P. 44
[Signature]



RECORDED DECEMBER 31, 1957 AT 4:33 P.M. #30281

NOTE: See R.M.C.O. NEWLANDS
 BLOCK 2 LOTS 18 & 17 - PLAT BOOK "E"
 PAGE 199 SEE PLAT BY R. DALTON AUG 1948 EST. OF U.M. MODEL
 ALSO SEE R.M.C.O. PLAT BOOK "D"
 PAGE 101 LOT 5 BY R. DALTON

PROPERTY
 OF
O. T. WEAVER
GREENVILLE S.C.
 SCALE 1"=50' APRIL 10, 1955

119

DEC 31 1957

Iron pins at all corners

C. C. JONES & ASSOCIATES
 ENGINEERS
 GREENVILLE, S.C.